

Historic, Archive Document

Do not assume content reflects current scientific knowledge, policies, or practices.

62.43



GLADIOLUS

for 1945

LIBRARY
RECEIVED
★ FEB 20 1945 ★
U S Department of Agriculture

Noweta



Gardens

"Nō-wē-tā" is the Indian word meaning Beautiful

ST. CHARLES
MINNESOTA

Colorful Glimpses

April showers bring May flowers, but April showers did not bring August gladiolus this year. Our spring was so wet that it was indeed a problem to get the bulbs planted. Spring and early summer were so wet the bulbs didn't have to make much of any root growth. August came with a sustained drought and some very hot weather. Flowers always respond to kind treatment and they certainly responded to the drought too. Large bulbs often produced 4 or 5 florets, the rest of the buds a burned up mess. Flower cutting for the florists was heart rendering. Many varieties were scarcely recognizable. Consequently, we had fewer show spikes than ever. But we did have one bright spot—a small garden area that we could water, in which we had a few of the choicer varieties planted. In this plot Gove's new varieties again loomed up. Palmer's Spotlight, Minstrel, and Alpine were our favorites. Leading Lady proved its namesake. Our own Myrth was a fanciers' and florists' delight. Rosy Morn seemed to reveal that a rosy morn was indeed awakening for itself. Lins' new varieties, Mandaleen, Halloween, and Melrose came in for some attention too. Miss Wisconsin was very fine.

Though we have several hundred seedlings under trial and some were very good we felt that it was wisest to give them another year's trial. Hence we are only introducing one, Rose Gem. But with more favorable conditions next year, we should have quite a number sufficiently tried out.

Our early cut flowers were fine, blooming largely before the drought. September again was favorable with a fine array of flowers going to the florists. Nature always seems to compensate in some manner or other. This time it provided a very warm pleasant fall, giving us a splendid bulb crop with which to anticipate next year's growings. Every bulb was allowed to mature, cutting our last flowers at the very late date of November 2.

The picture on the cover is a small decorative seedling with fall blooming asters. The variety of aster is Queen Mary, a pale blue.

Wishing you a successful and colorful season's growings!

Carl Fischer

Mr. and Mrs. Anvie Peterson

Louine Fischer

Cut Flower Varieties We Intend to Use Next Year for Commercial Cutting

	EARLY	MID-SEASON	LATE
WHITE and Cream	Anna Mae Maid of Orleans Snow Princess	Corona Maid of Orleans Margaret Beaton Snow Princess Surfside	Margaret Beaton Shirley Temple Snow Princess Surfside
YELLOW and ORANGE	Brightside Goldstaub King's Ransom Miss Bloomington	Autumn Gold Mother Kadel Ruffled Beauty	Autumn Gold Barcarole Ruffled Beauty
PINK	Margaret Fulton Sweetheart	Ethel Cave Cole Greta Garbo Picardy Rosa van Lima Wings of Song	Phyllis McQuiston Miss Alameda Wings of Song
RED	Algonquin Firefly Valeria	Beacon Blaze Leona Memory of Hindenberg Valeria Valor	Beacon Dr. Bennett Memory of Hindenberg Valor
Lavender and Purple	Early Rose Gloaming King Arthur King Lear	Charmaine Gloaming King Arthur Lavender Ruffles Parnassus	King Arthur Parnassus
BLUE and SMOKY	Bella Donna Blue Beauty Milford	Blue Admiral Blue Beauty Chief Multnomah Milford	Blue Admiral Chief Multnomah

Our 1945 Introduction

ROSE GEM

Incense x Sweetheart X Lavender & Gold Small Decorative

The real test of a flower's worth is the same test as that of a work of art, a poem, or a piece of music—does time find its beauty enduring? Largeness of size is never asked. We feel there is a distinct need for more small flowering gladiolus. The finest arrangements in flowers that we have ever made up have been from glads of this class. They are invaluable for tip bouquets, and fit well in the average room. We offer Rose Gem to the arrangement lover. Rose Gem is a euphony of color and style. Three to five waxy, distinctly blotched 3½" florets are gracefully arranged on slender willowy stems. It is a medium rose, somewhere between the hues of Chamouny, Rose o' Day, and Early Rose. The color and ruffling are accentuated by a large sharp cream blotch. A vigorous grower and runaway propagator. Burns in hot weather. Mildly fragrant.

Bulbs any size 50c each. Bbts. 10-35c.



COMING COMMERCIALS

Badger Beauty	Mohawk
Discovery	Mother Kadel
Elizabeth the Queen	Myrth
Fair Angel	Palermo
High Finance	Pink Radiance
Lady Jane	Spotlight
Lantana	Stoptlight
Lavender and Gold	Susquehanna
Leading Lady	Vangold
Legend	Vulcan



TESTIMONIALS

Rose O'Day in my estimation is "best of all glads", but some gentlemen prefer blondes.—O. H. Kaupp, Penn.

* * *

I have never seen a more beautiful glad that I had from small bulbs of your Legend last summer.—Hazel Dubley, Ohio.

* * *

Snowsprite and Rose O'Day both look very promising and I'll want more of each, but the variety that won me completely was China Maid, of which you sent me gratis bulbs. Good growth and size, and the color is absolutely wonderful.—L. M. Fairchild, N. Y.

* * *

I like Centennial very much. We are still short of good reds.—R. Pommert, Wash.

* * *

Of your 3 Rose O'Day bulblets, 2 had flower heads, and one of these two developed a lovely spike 17 inches long—14 florets, with five 4¼-inch florets open, is also a good keeper. Autumn Gold is the best yellow we have, and I want more.—Wm. Hagedorn, Nebraska.



ROSE GEM

Descriptive Price List



MYRTH

ALADDIN (Palmer) (Midseason) Large beautifully ruffled deep salmon with cream blotch. This year Aladdin was very beautiful for us. Oftimes it is inclined to grow short from the ground to the first floret, although it throws a long flowerhead. (L. 3-.25; 10-.70) (S. 10-.25) Bbts. .20 per package.

ALGONQUIN (Palmer) (Midseason) One of our favorite bright scarlet commercials. Opens 8 wide open blooms on a straight stem. (L. 2-.25; 10-\$1.00) (S. 5-.25; 10-.40)

ALPINE (Palmer) (Early midseason) We grew 2 spikes of Alpine last summer and fell in love with both of them. Each spike reminded one of an arrangement of waxy, ruffled white lace. The critic would immediately see one fault, a clubby tip somewhat similar to the old W. H. Phipps spikes. It would seem that 4 or 5 additional buds are necessary to carry out the true grace of the arrangement and ruffling of this flower. But to see Alpine is to love it. Produces a goodly number of large bbs. (M. 1-\$2) (S. \$1.25 ea.)

ANNA MAE (Pommert) (Early) We consider this the best early pure white commercial. Blooms a week before Maid of Orleans or Snow Princess. Straight stem and good placement. (L. 2-.20; 10-.80) (M. 3-.25; 10-.60) (S. 4-.20; 10-.40) Bbts. Pkg. .20.

ARETHUSA (Fischer) (Midseason) Large and consistently tall growing ruffled buff. Very good seed parent. A really fine glad. (L. 10.65) (M. 10-.35) (S. 10-.25) Bbts. Pkg. .20.

ASOKA (Fischer) (Early) A bright tall red seedling of ours that we are using as an early cut flower. Opens 4 or 5 well placed blooms. (L. 10-.65) (M. 10-.35) (S. 10-.25) Bbts. Pkg. .20.

ATHLONE (B. Palmer) (Early midseason) As grown in the summer of '43, this was one of the finest varieties I have ever seen. Performance was favorable this year. A tall, stately, waxy light buff somewhat paler than Duna in color. Blooms are round, carved, and immaculately arranged in a precise formal style. We had excellent growth on our stock this year. (L. \$1.50) (M. \$1.00) (S. .75)

AUTUMN GOLD (Prestgard) (Late) This year we fairly stuffed our florists with Autumn Gold from midseason on, with never a kick. Several times we would overhear, "Oh, there's that new orange again." Even though $\frac{1}{4}$ of our load would be Autumn Gold, it would still be welcomed on the next trip. We shipped it by the thousands also. Everything cannot be claimed for this ruffled rich golden yellow, since it is inclined to be on the short side. However, it can be cut to the ground without injuring the foliage. Thus, when cut, its length compares favorably. Autumn Gold with its dazzling color appeal makes up beautifully in floral pieces. A very vigorous grower, blooming well from small sizes. The heavy substance withstands the frost well. In the commercial price range this year. (L. 2-.25; 10-\$1.00) (M. 2-.15; 10-.60) (S. 4-.20; 10-.40) Bb'ts 100-.35.

AVALON (Marshall Midseason) In Avalon we have a combination of vigor, height, color and many open, but an unhappy habit, like New Era, of openness of flowerhead. Nine 5-inch florets blooming on a 25-inch flowerhead would be typical blooming habits of this variety. (L. 1-.20; 10-\$1.60) (M. 1-.15) (S. 1-.10; 10-.80) Bbts. 10-.15; 100-.75.

I have bought bulbs from several growers in the past 5 years, but never in all my experience have I received such clean bulbs or such generous treatment.—Rev. Kincaid, N. Y.

- BADGER BEAUTY** (Krueger) (Midseason) A tall clear lavender that is rapidly gaining in popularity. Would that it opened a few more and had heavier substance. (L. .25) (M. .15) (S. .10) Bbts. 10-.20.
- BARCAROLE** (Palmer) (Late midseason) Heavily ruffled large orange that opens up to 6 well placed blooms. Although it is not always as tall as we would like, it produces a lovely spike. (L. 10-.65) (M. 10-.35) (S. 10-.25) Bbts.—Pkg. .20.
- BEACON** (Palmer) (Midseason) One of the very best cut flowers on the market. Opens 8 well placed blooms on tall straight willowy stems. This rose scarlet with a cream throat is as fine for exhibition purposes as commercial. (L. 10-.65) (M. 10-.35) (S. 10-.25) Bbts.—Pkg. .20.
- BELLA DONNA** (Pfitzer) (Early) The most beautiful color of all the blues. Not as vigorous as some. (L. 3-.25; 10-.70)
- BELTRAMI** (Lins) A smooth pale smoky that shows its Picardy ancestry. Recommended. (L. .20) (M. .15) (S. .10)
- BLACK DIAMOND** (Gelser) (Early) If you like the dark ones, you will be won by the velvety sheen, rich coloring and ruffling of Black Diamond. I believe this Morocco seedling is the most luxurious of the dark reds. Bulblets are difficult to germinate. (L. .40) (M. .30) (S. .20) Bbts. 10-.25; 100-\$2.00.
- BLACK OPAL** (Errey) (Midseason) Magnificent tall deep red. The 9-10 round florets are perfectly placed on a stretchy flower head. One of the best dark reds. (L. 3-.25; 10-.75) (M. 4-.20; 10-.40) (S. 10-.25) Bbts.—Pkg. .20.
- BLAZE** (Lins) (Midseason) Commercial light scarlet self. Mad propagator. Makes a fine cut flower. (L. 3-.25; 10-.75) (M. 4-.20; 10-.40) (S. 10-.25) Bbts.—Pkg. .20.
- BLESSED DAMOZEL** (Baerman) (Late midseason) A new edition of New Era that seems to be more vigorous. Rather short for us during the dry spell this past summer. (L. \$1.50) (M. 1-\$1.00) (S. .50) Bbts. 3-.25.
- BLUE BEAUTY** (Pfitzer) (Early) One of the best medium blues. It is a tall, strong grower and produces up to 7 large wide open blooms. (L. 3-.25; 10-.75)
- BLUE RUFFLES** (Brauer) (Midseason) This daintily ruffled delicate blue was a most pleasing addition to our garden. We would gladly increase its height if it were possible. The average fancier would be delighted with this pastel blue. (L. .25) (M. .15) (S. 2-.20) Bbts. 10-.20; 100-\$1.60.
- BURMA** (Palmer) (Midseason) Burma is unusual in its rich coloring, very heavy substance, and fine ruffling. The color is a rich rose-red somewhere between red and purple; the spike is of good height and of fine arrangement. It was one of the best spikes of the season in Oregon last year. Although our spikes were not up to par this year, we saw some magnificent specimens at several shows. (L. \$1.50) (M. \$1.00) (S. .50) Bbts. 3-.25; 10-.75.
- CAMROSE** (Twomey) (Midseason) An ethereal shade of shell pink shading to a cream throat. We are watching this as a likely commercial cut flower. Probably not too heat resistant. (L. 3-.25; 10-.75) (M. 3-.20; 10-.50) (S. 10-.30) Bbts. .25 pkg.
- CANDELABRA** (Fischer) (Early) Winner of American Home Medal 1943. Beautifully ruffled light yellow Candelabra is sure to win your whole-hearted admiration. Possesses perfect clarity of color. This medium decorative opens 6 perfectly placed blooms on tall, straight stems. (L. \$1.50) (M. \$1.00) (S. .75)
- CARILLON** (Palmer) (Early midseason) Light rose pink with creamy white throat. Produces beautiful blooms when it blooms from fairly large bulbs. Averages 6 medium large wide-open blooms on straight stems. (L. 3-.25; 10-.70) (M. 5-.25; 10-.35) (S. 10-.25) Bbts. .20 pkg.
- CENTENNIAL** (Fischer) (Midseason) We have had some perfectly marvelous spikes of this soft scarlet stalwart saucer-like giant this year. Opens 5-6 large blooms on a long flower head. Centennial blooms much more beautifully when it is planted early and from large bulbs. Has won high honors at several shows. (L. 25; 10-\$2) (M. .20; 10-\$.160) (S. .15; 10-\$1.20)
- CHARMAINE** (New) (Early) A dull rose colored cut flower which has gained popularity. (L. 3-.25; 10-.75) (M. 4-.20; 10-.45) (S. 5-.20; 10-.30) Bbts. 25c per pkg.
- CHIEF MULTNOMAH** (Ellis) (Midseason) A dark smoky enhanced by a red blotch in the throat. One of our favorite smokies. Tall and very vigorous plants produce 4-6 blooms on lengthy spikes. (L. 2-.20; 10-.80) (M. 3-.20; 10-.50)
- CHINA MAID** (Fischer) (Midseason) Due to the drought, performance was not up to par this year. Mr. E. H. Lins of Cologne writes, "China Maid is certainly a fine clean beauty. Since Picardy, at least for me, is losing color (they are pale and lifeless) China Maid should fill the bill, and I would say it is more beautiful than Picardy at its best." It is an unusual shade of clear glowing salmon, the color accentuated by a warm yellow throat and midribs. (L. .25; 10-\$2.00) (M. .15; 10-\$1.20) (S. .10; 10-.80) Bbts. 10-.20; 100-\$1.50.



DISCOVERY (From a Small Bulb)

Received our bulbs in fine condition and was surely satisfied. Thanks very much for the overcount, the free bulbs, and the prompt delivery.—Garry Iles, Iowa.



LAVENDER AND GOLD

CORONA (Palmer) (Midseason) One of the season's most captivating flowers was tall, distinctive Corona. It comes well-named since a corona of light rose pink encircles a creamy throat. Believe it to be one of Palmer's best. Opens 6-8 large, wide-open blooms on a lengthy straight spike. A cluster of large fat bulblets come well attached to each bulb as one lifts them out of the ground. (L. 2-.30; 10; 10-\$1.20) (M. 2-.20; 10-.80) (S. 4-.25; 10-.50) Bbts. .20 pkg.

CRINKLE CREAM (Ellis) (Midseason) A ruffled pale yellow with wide open florets, good placement and average height. Good propagator and germinator. Quite popular on the show table. (L. \$1.00) (M. .75) (S. .50) Bbts. 2-.25; 10-\$1.00.

DIANE (Krueger) (Late) A large salmon orange with a cream throat that has been very good, although it was rather short for us this year. (L. 2-.20; 10-.80) (M. 3-.20; 10-.50) (S. 4-.20; 10-.35) Bbts. 100-.35.

DISCOVERY (Baerman) (Early midseason) Very tall, heavily ruffled cream to light yellow with a small distinctive red star in the throat. Tall straight stems which open 5 to 6 large florets. Very distinctive and a likely commercial. (L. .75; 10-\$6.00) (M. .50; 10-\$4.00) (S. .30; 10-\$2.40) Bbts. 3-.25; 10-.60.

DR. WHITELY (Riley) (Midseason) A vigorous remarkably clear yellowish apricot with a golden throat. Our experiences with this one have been quite favorable. Probably a coming commercial. (L. .60) (M. .40)

EARLY ROSE (Jack) (Early) Very popular pleasing shade of medium rose. A florists' and fanciers' favorite. (L. 3-.25; 10-.70) (M. 5-.20; 10-.35) (S. 10-.25) Bbts. .20 pkg.

EDITH GRACE (Harder) (Later) This variety was headed for the discard list for us, but few varieties withstood the drought as did Edith Grace last summer. When grown well, it is white with a rich wine throat. The richest and most distinctively blotched of all the blotched ones. (L. 2-.20; 10-.80) (M. 3-.20; 10-.50) (S. 4-.20; 10-.35) Bbts. 100-.50.

EDVARD GRIEG (Prestgard) (Early) Best "blue" of recent introduction. Color similar to Ave Maria. Tall, opens 7 on a 19 bud spike from medium bulbs. Moderate propagator. (L. .25) (M. .20) (S. .15)

ELIZABETH THE QUEEN (White) (Midseason) This variety deserves the popularity thus far received and is destined to be grown for years to come. Beautiful shade of lavender with a darker line. It is intensely ruffled and of fine form. (L. .50; 10-\$4.00) (M. .35; 10-\$2.80) (S. .25; 10-\$2.00) Bbts. 6-.25; 100-\$3.25.

ETHEL CAVE COLE (Cave) (Early midseason) A large light pink that makes a fine cut flower as well as an exhibition spike. Strong husky grower that opens 8 to 9 on a long flowerhead. (L. .15; 10-\$1.20) (M. 2-.20; 10-.80)

FAIR ANGEL (Hatch) (Early) A fine ruffled cream shading to a deeper cream throat. A tall growing variety that opens about 6 large florets on slender stems. Highly recommended altho not much in evidence in our last summer's plantings. (L. .35; 10-\$2.80) (M. .25) (S. 2-.25) Bbts. 15-.25; 100-\$1.50.

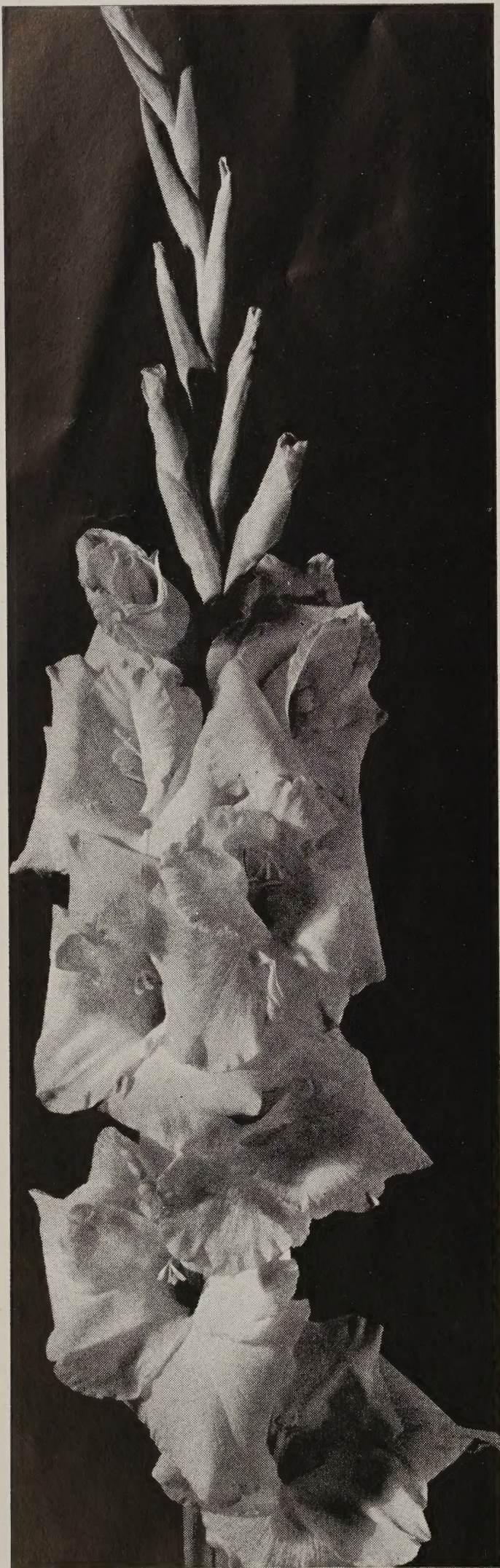
GARDENIA (Scheer) (Early) A tall growing cream decorative that has value for early cutting. Mad propagator. (L. 10-.65) (M. 10-.35) (S. 10-.25) Bbts. .20 pkg.

Just a few lines to thank you for the best glad order I've ever received. I was so surprised when I opened the box I couldn't believe it. And the China Maid made me an everlasting customer. —Mrs. Leonard Pasell, Minn.

- GLOAMING** (Zimmer) (Early) One of the tallest and most perfect cutting varieties we grow. Produces a graceful long ribbon of white throated light purple blooms. Some years its bulbs are subject to disease. (L. 10-.65) (M. 10-.35) (S. 10-.25) Bbts .20 pkg.
- GOLDSTAUB** (Goldust) (Pfitzer) (Early) No early cut flower collection is complete without Goldstaub. It is very early, being the first variety to bloom last summer. Blooms very freely, and is an excellent shipper. Fine deep color and very prolific. (L. 10-.65) (M. 10-.35) (S. 10-.25) Bbts. .20 pkg.
- GRETA GARBO** (Pfitzer) (Midseason) A pleasing color combination of pale apricot or buff pink. Opens 5 or 6 perfectly formed, finely placed flowers on a medium tall stem. Healthy grower and a rapid propagator. (L. 3-.25; 10-.70) (M. 10-.45) (S. 10-.25) Bbts. .30 pkg.
- HALLOWEEN** (Lins) (Early midseason) Halloween won a place in our hearts last summer because of its rich, vivid lustrous orange-scarlet coloring. Builds a medium tall spike that is well arranged. (L. .20) (M. .15) (S. .10) Bbts. 10-.20.
- HIGH FINANCE** (Wilson) (Late midseason) Smoky light orange gray with cream throat blotch. It is a paler more delicately colored version of the older Mother Machree, Plants are tall, husky and very prolific. A leading smoky that is becoming increasingly popular. (L. .30; 10-\$2.40) (M. .20) (S. 2-.20) Bbts. 15-.20; 100-\$1.00.
- JEANIE** (Pruitt) (Midseason) A clear-cut and distinct medium pure pink with a golden throat. Good grower. (L. 2-.20; 10-.80) (M. 3-.25; 10-.60) (S. 6-.25; 10-.35) Pkg. bbts. .25.
- KING ARTHUR** (Arenius) (Early) A very distinctive deep toned lavender approaching a light purple shade. This variety possesses unusually heavy lustrous petals which are beautifully ruffled. An old stand-by of ours. (L. 10-.65.)
- KING LEAR** (Palmer) (Early) Very tall ruffled luxurious reddish purple bordered with a fine silver line on edge of petals. Excellent grower. Except that it is loosely attached, it has the qualities which make a fine glad. (L. 3-.25; 10-.70) (M. 10-.40) (S. 10-.25) Bbts .20 pkg.
- KING'S RANSOM** (Almey) (Early) A vigorous orange tinted salmon red that we have added to our early cut flower plantings. (L. 10-.65) (S. 10-.25)
- LADY JANE** (Lake) (Midseason) A lovely cream with yellow lip petals that is a likely commercial. The beautiful, waxy, translucent florets of fine coloring and precise carving of last season's blooming evaporated with the summer's heat and drought. (L. .20; 10-\$1.60) (M. 2-.30; 10-\$1.20) (S. 2-.20; 10-.80) Bbts. .25 pkg.
- LANTANA** (Palmer) (Early) Lantana is a beautiful vivid color of orange-salmon, shading to a golden throat; a flower that has instant color appeal and is a fine performer. Like Autumn Gold, it is short, but its other fine qualities are sure to make it a leading early cut flower variety. (L. \$1.00) (M. .60) (S. .40) Bbts. 10-.35.
- LAVENDER AND GOLD** (Baerman) (Very early) The longer you know Lavender and Gold, the more you appreciate its pastel daintiness. Anyone who likes the medium decoratives will certainly like this one. Opens 5-7 frilled yellow-throated lavender blooms on a wiry straight stem. Good grower and propagator. Excellent commercial. (L. .30; 10-\$2.40) Remainder of sizes withheld for propagation.
- LAVENDER RUFFLES** (Wilson) (Early) When well grown, a beautiful combination of lavender and ruffles. Can be very ordinary. Becoming popular as a commercial. (L. 3-.25; 10-.70)



LEADING LADY



LEGEND

LEADING LADY (Johnston) (Midseason) This creamy sport of Picardy produced one of the finest spikes of the season as shown by the picture on page 7. We nominate tall, stately, winsome Leading Lady to the gladiolus hall of fame. (L. .60; 10-\$4.80) (M. .40; 10-\$3.20) (S. .25; 10-\$2.00) Bbts. 5-.40; 100-\$5.00.

LEGEND (Fischer) (Midseason) Tall, fine, and wonderfully delicate. Many spikes photographically perfect in their broad, massive beauty; real show spikes! This warm light pink has a happy trait of producing better flowers from No. 5 bulbs than many varieties do from No. 1's. If you like light pinks, you will surely like this one. (L. .25; 10-\$2.00) (M. .15; 10-\$1.20) (S. .10; 10-.80)

LEONA (Pruitt) (Midseason) One of the best deep rose reds on the market; tall, straight, and wiry stemmed—qualities which make it a good cutter. (L. 2-.20; 10-.80.)

LIBERATOR (Baerman) (Midseason) One of the most richly colored and most stylishly formed scarlets. The blooms are as precisely formed as if they were finely moulded and shaped. However, under adverse conditions, the color sometimes peels. This beautiful glad is deserving of more publicity. (L. 2-.30; 10-\$1.20) (M. 2-.20; 10-.80) (S. 4-.20; 10-.50) Bbts. 15-.25; 100-\$1.00.

MAID OF ORLEANS (Pfitzer) (Early) Standard old favorite medium tall milky white commercial. (L. 10-.65) (M. 10-.35) (S. 10-.25) Bbts. .20 pkg.

MANDALEEN (Lins) (Late midseason) Mandaleen is a shimmering light pink blending to a creamy white throat that won instant approval last summer. Coupled with its color appeal it is an excellent performer in every way. Should be a florists' and fanciers' favorite. Strongly recommended. (L. .35) (M. .25) (S. .15) Bbts. 10-.35.

MARGARET BEATON (Twomey) (Early midseason) A rich milky white with a tiny spark of vermillion deep in the throat. Reminds one of those beautiful white phlox with a pink eye. Spikes are tall and free from crooking. Takes its place in the gladiolus hall of fame. (L. 2-.20; 10-.80) (M. 3-.25, 10-.60) (S. 6-.25; 10-.35) Bbts. .25 pkg.

MARGARET FULTON (Ogrodnichek) (Early) Recommended as one of the best all-around glads. Rich salmon cut flower of distinctive clean-cut form. (L. 10-.65) (M. 10-.35) (S. 10-.25) Bbts. .20 pkg.

MARGUERITE (Pommert) (Midseason) An attractive watermelon pink blending to a soft yellow throat. Tall and massive. (L. 2-.25; 10-\$1.00) (M. 2-.20; 10-.60) (S. 4-.20; 10-.40)

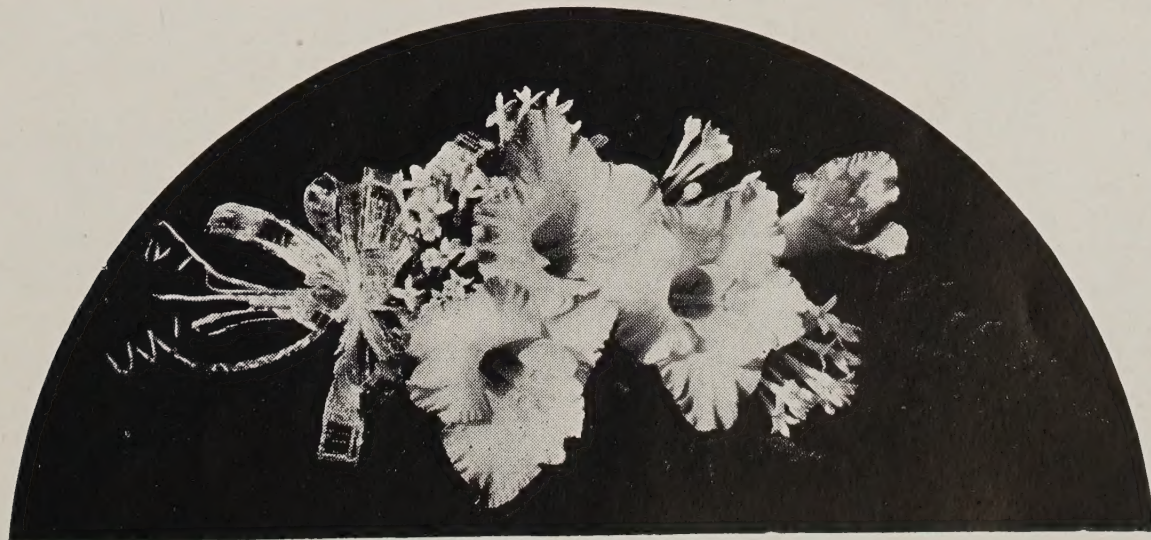
MAXWELTON (Baerman) (Late midseason) Distinctive tall large rose with deeper feather in the throat. Opens 8 perfectly placed blooms on a straight stem. Would be an ideal glad if it propagated faster, although it does propagate much better now than it did formerly. (L. .35; 10-\$2.80)

Autumn Gold produced much better florets and coloring than Vassar. A little taller and larger with deeper peach edging. Its placement was poor but of excellent commercial value. Texture fine.—E. A. Lins, Wisconsin.

We certainly have enjoyed the lovely glads we have had this summer from the nice, disease free bulbs we got from you. Snowsprite, Red Plush, and China Maid are all very lovely.—D. L. Hoyt, Iowa.

- MEMORY OF HINDENBURG** (Pfitzer) (Midseason) Speaking of red, my mind turns to those tall, rich, lustrous bunches of Memory of Hindenburg we cut last fall. It sold at a premium at the florists. It is taller, richer, more velvety, much more prolific, and a better bulb maker than the older Commander Koehl. (L. 3-.25; 10-.70) (M. 4-.20; 10-.40) (S. 10-.25) Bbts. .20 pkg.
- MILFORD** (Rides) (Midseason) The tallest and huskiest of all the blues but more or less at the bottom of the scale for color. Very large light violet with deeper throat markings. Sometimes not very attractively colored on reverse side of petals. (L. 3-.25; 10-.70) (M. 4-.20; 10-.40) (S. 10-.25) Bbts. .20 pkg.
- MINSTREL** (Palmer) (Midseason) Minstrel can well be considered the newest sensation in true lavender. Each spike was tall with the florets arranged like lacy butterflies up the stem. Ideal for large basket work. Destined to become very popular. (M. \$2.50)
- MISS BLOOMINGTON** (Kunderd) (Early) A tall, clear light yellow that has gone a long way as an early cut flower. Vigorous and a good propagator. (L. 10-.65) (M. 10-.35) (S. 10-.25) Bbts. .20 pkg.
- MISTY DAWN** (Rich) (Midseason) Appropriately named since the brilliant throat blotch reminds one of the sun rising through the mists of a foggy morning. The large soft gray smoky florets are well arranged on substantial spikes. A leading smoky. (L. .20; 10-\$1.60) (M. .15; 10-\$1.20) (S. 2-.15; 10-.60)
- MOHAWK** (Stevens) (Late midseason) A welcome addition to the dark red class. Has a richer, more velvety luster than Black Opal, but not likely to displace it. Gave an excellent account of itself last summer. Opens a goodly number on a straight stem. Fast propagator. (L. .25; 10-\$2.00) (M. .15; 10-\$1.20) (S. .10; 10-.80) Bbts. 25-.35; 100-.75.
- MOTHER KADEL** (Kadel) (Midseason) A coming commercial yellow with no markings. Two generations removed from the older Golden Dream, of which it is reminiscent. More graceful and airy than its grandparent. Five to six rather plain florets on medium tall spikes. (L. .20; 10-\$1.60) (M. 2-.25; 10-\$1.00) (S. 2-.15; 10-.60) Bbts. 10-.15; 100-\$1.00.
- MRS. MARK'S MEMORY** (Pfitzer) (Midseason) One of the largest red violet glads. Unhappily, it is too loosely attached to be of commercial value. It is a giant, opening 6 large round plain-petaled florets. (L. .35) (M. .25)
- MYRNA** (Pruitt) (Early midseason) A ruffled symphony in white. Becoming more popular each year. Good propagator. Generally recognized as being short. (L. 10-.65) (M. 10-.35) (S. 10-.25) Bbts. .20 pkg.
- MYRTH** (Fischer) (Midseason) (LotusxM. Fulton) X Picardy. (Correction on last year's parentage) Myrth is the happy combination of 3 great glads. From Lotus it inherits the styling and delicate coloring of the Prestgard strain; from Margaret Fulton, its stalwart performance, and from Picardy, its tall, willowy spikes. Intensely frilled, mellow light pink blending to a large creamy throat. Heavy substance. Jim Odell, editor of the New England Year Book writes us, "Myrth has much that hundreds of glads salmon with a cream throat lack—it has stature, substance, charm, and a grand natural color and ruffling—surely quite a gal. Seldom has a glad with such prospect been offered so low in price. For me it grew about as tall as White Gold." Show record for 1944—(Only times exhibited) Divisional champion Wisconsin State Show. Blue ribbon on 3 spikes at Iowa State Show. (L. \$1.00; 10-\$8.00) (M. .75; 10-\$6.00) (S. .50; 10-\$4.00) Bbts. .15; 10-\$1.00.
- NEW ERA** (Ellis) (Midseason) Exquisitely pure pink blending to a white throat. The feature of this stunning beautiful variety is the intense and uniform frilling of its petals. (L. 10-.65) (M. 10-.35) (S. 10-.25) Bbts. .20 pkg.
- OPHIR** (Baerman) (Early midseason) Ophir is a flare of lacy frills, elaborate styling, and beautiful coloring. The clear crystalline yellow is strikingly set off by a sharp cherry spearhead in the throat. Highly recommended to the connoisseur. Short in stature, though a good grower otherwise. Because of the drought, and being planted too near an oak tree, little was seen of Ophir last summer. (L. .50; 10-\$4.00) (M. .40; 10-\$3.20) (S. .25; 10-\$2.00) Bbts. 6-.25; 100-\$3.00.
- PALERMO** (R. Pruitt) (Late) Palermo may well be compared to Barcarole in its general tone effect. It is less refined, though much larger and taller. The florets are a little too loosely attached. (L. .25; 10-\$2.00) (M. .20) (S. 2-.25)
- PARNASSUS** (Ristow) (Midseason) Very pleasing shade of rich purple that is proving to be a good commercial. Produces many fine spikes hailed with a cheer by the florists. The large, round florets have a white feather in the throat. Run-away propagator. (L. 2-.25; 10-\$1.00) (M. 2-.15; 10-.60) (S. 4-.20; 10-.40) Bbts. 100-.50.

In the spring I sent several orders of bulbs to you and I want to say I had the finest flowers I have ever had. At our flower show here, we took the show.—Esther Bengs, Okla.



A Beautiful Corsage of Snowsprite



SPOTLIGHT

PAUL REVERE (Baerman) (Early midseason) A glossy, velvety rose red that is wonderfully rich and unusual in color. Opens 4 or 5 blooms on fairly tall spikes but with rather short flower heads. Good grower, medium decorative in size, and informal in arrangement. (L. .50; 10-\$4.00) (M. .40; 10-\$3.20) (S. .25; 10-\$2.00) Bbts. 6-.25; 100-\$3.00.

PHYLLIS MCQUISTON (Stuart) (Midseason) Strong growing pure pink. Good commercial. One of our best late cut flowers. (L. 10-.65) (M. 10-.35)

PICARDY (Palmer) (Midseason) The standard by which other glads are judged. The beautiful apricot salmon that everyone knows. More widely grown than any glad in existence. (L. 10-.65) (M. 10-.35) (S. 10-.25) Bbts. .20 pkg.

RED CHARM (Butt) (Early midseason) A charm of red, indeed, and a very important variety. Opens a generous number of bright, round, well placed florets on tall, willowly spikes. Destined to be a must-have in every one's garden. (L. .20; 10-\$1.60) (M. 2-.25; 10-\$1.00) (S. 2-.15; 10-.60) Bbts. 2-.25; 10-\$1.00.

RED PLUSH (Baerman) (Early) Words cannot express the regal beauty of this well named flower grown under ideal conditions, but it is an unusually thirsty glad and will sulk in dry weather. A soft rich scarlet that is unusually full in form. Have had a number of requests for Red Plush from commercial growers, but unhappily, it is a slow multiplier. (L. \$1.00; 10-\$8.00) (M. .75) (S. .50) Bbts. 2-.25; 10-\$1.00.

RIO RITA (Lins) (Late midseason) A large exhibition scarlet orange that makes an impressive spike. We have not had much blooming experience with this one, although it has won its share of awards, and is in demand. (L. .35) (M. .25) (S. .15)

ROSA VAN LIMA (Pfitzer) (Early midseason) An extra fine commercial light pink. Very uniform and dependable in habit. Excellent grower. (L. 10-.65) (M. 10-.35) Bbts. .20 pkg.

ROSE O' DAY (Fischer) (Early) 54", 26", 9-10 open with 6" florets from medium bulbs. Rose O' Day is distinctive in color, massive in size, and robust in growth. The spikes are unusual in their arrow-like straightness. Our Rochester florists proclaimed this rosy lavender to be our best production. For us this was sort of an off year for Rose O' Day, though we received many fine testimonials. After the drought we cut some fairly representative spikes from small bulbs. (L. 1.50; 10-\$12.00) (M. \$1.00; 10-\$8.00) (S. .75; 10-\$6.00) Bbts. .20; 10-\$1.50.

RUFFLED BEAUTY (Prestgard) (Late) Light yellow of unusual personality and ruffling. Opens several blooms on a medium length stem. Lovely for floral pieces. (L. 10-.65) (M. 10-.35) (S. 10-.25) Bbts. .20 pkg.

SILVER SWORD (Hatch) (Midseason) A year ago this one gave us a lovely large spike, as well as a quantity of seeds, but this year it bore a faint resemblance of its former self. Further trial will be necessary to establish its worth. When well grown, it is a taller, whiter, and larger Maid of Orleans with more open. (L. .25) (M. .15) (S. .10)

SILVERY TETON (Zimmer) (Midseason) An improved Dream O' Beauty, and one that performed very well for us during the drought last summer. A pleasing shade of rose red. (L. 1-.20) (M. 2-.25)

Autumn Gold is hardly yellow—it is a wonderful ruffled, light orange with golden throat—very beautiful.—Mrs. Geo. Vawter, Ohio.

SNOW PRINCESS (Pfitzer) (Early mid-season) Try Snow Princess if you want to get started in a white on short notice. An improved Maid of Orleans, being purer in color, larger, and more uniform in performance. Very strong grower; bulblets grow to sizable bulbs the first year. (L. 3-.25; 10-.70) (M. 10-.40) (S. 10-.25) Pkg. bbs. .20.

SNOWSPRITE (Fischer) (Early midseason) Exquisitely ruffled milky white medium decorative. Unsurpassed by any other white for artistic floral pieces. Excellent grower and fast propagator. (L. .25; 10-\$2.00) (M. .15; 10-\$1.20) (S. .10; 10-.80) Bbts. 10-.20; 100-\$1.00.

SPOTLIGHT (Palmer) (Early) To see Spotlight is to study it; how is it different—why do I like it? Clear medium yellow with a trickle of scarlet at the base of the throat petals. Florets are large, round, and full; well arranged on very tall spikes. Propagates like Corona, and will likely be as widely grown. Strikingly different! (M. \$2.00) (S. \$1.50)

STOPLIGHT (Lins) (Midseason) A stopper indeed! Has a rich, silky luster, a brilliant color, and tall handsome spikes, but the prettily ruffled florets were a trifle small and far apart. Notwithstanding, it is one of our favorite scarlets. Very good grower and an excellent propagator. We recommend it highly as a coming commercial. (L. .25; 10-\$2.00) (M. .20; 10-\$1.60) (S. .10; 10-.80) Bbts. 10-.25; 100-\$1.50.

SURFSIDE (Winsor) (Midseason) Tall ruffled white with slight pencil markings in throat. This vigorous grower was one of our favorite commercial whites this year. Strongly recommended for commercial and exhibition use. (L. 10-.65) (M. 10-.35) (S. 10-.25) Pkg. bbs. .20.

SUSQUEHANNA (Herridge) (Midseason) A buff edition of the older Heritage of which it is a seedling. Somewhat similar to Duna in color. Tall tapering spikes with many open. Headed for the commercial brackets. (L. .50; 10-\$4.00) (M. .40; 10-\$3.20) (S. .25) Bbts. 7-.25.

SWEETHEART (Prestgard) (Early) Waxy frilled pure pink blendings to a large snow white throat. Unexcelled for forcing. We consider this variety with its tall wiry stem, extreme earliness, and exquisitely fresh color an A1 florists' glad. (L. 10-.65) (M. 10-.35) (S. 10-.25) Bbts. .20 pkg.

VALERIA (Pruitt) (Early) We had perfectly magnificent Valeria last summer. Many of them were show spikes. It is very tall, a pleasing shade of scarlet, and builds a substantial spike. Bulblets are often difficult to germinate or it would be a universal favorite along with Picardy, Beacon, and Margaret Fulton. (L. 2-.20; 10-.80)

VALOR (Baerman) (Midseason) An A1 money maker as a cut flower with us the past two seasons. An unusual color which the florists request, being a mellow deep salmon with a rich yellow throat. Opens 8 well placed blooms on a long flowerhead. Blooms very well in late fall. (L. 2-.20; 10-.75) (M. 3-.20; 10-.50) (S. 10-.35) Bbts. .25 pkg.

VREDENBURGH (Pfitzer) (Early midseason) Vigorous and prolific pure white. Produces many bulblets which germinate well. Of commercial value. (L. 10-.65) (M. 10-.35) (S. 10-.25) Bbts. .20 pkg.

VULCAN (Stevens) (Midseason) A likely commercial. A pleasing large medium purple with faint white mid ribs. The plain-petaled blooms average 5-7 in number. Prolific. (L. .40) (M. .25) (S. .15) Bbts. 10-.25; 100-\$2.00.

WHITE CAMELLIA (Baerman) (Midseason) Pure white lily like blooms blending to a yellow throat. Habits identical to Camellia, including run-away propagation. (L. .25; 10-\$2.00) (M. 20; 10-\$1.60) (S. 2-.25; 10-\$1.00) Pkg. bbs. .25.

WHITE GOLD (Scheer) (Midseason) Tall, vigorous cream with 4-6" massive blooms on a straight stem. Has received much popularity since its introduction. Excellent growing habits. (L. .40; 10-\$3.20) (M. .25) (S. .15) Bbts. 10-.25; 100-\$2.00.

WINGS OF SONG (Ellis) (Midseason) An exceptionally fine rose salmon sometimes bordered with blue at the edges. Tall, with many open. Recipient of numerous awards. One of the leading cut flowers with us this year, taking its place with Margaret Fulton, Picardy, Snow Princess, Beacon, etc. (L. 3-.20; 10-.75) (M. 10-.50)

WINSTON (Palmer) (Early) A very lovely chaste ruffled cream gaining in general favor yearly. It rates at the top in beauty of form and coloring. Medium height. One of the most beautiful in its color class. Not a fast propagator. (L. .25; 10-\$2.00) (M. .20; 10-\$1.60) (S. 2-.25; 10-\$1.00) Bbts. 15-.25; 100-\$1.25.

I received my order of bulbs in good condition. I was pleasantly surprised at the extras you included. Your prices are right and your service prompt.—Adolph Mahr, Mich.



VALOR

Have wanted to thank you for the fine job you did with our late order—they were the finest bulbs we have received this year, and so many fine extras in high priced bulbs, and the quality was something we won't forget in many a day. We thank you for the 24-hour service.—Wm. Moore, Sr. & Jr., Nebr.

WHOLESALE PRICE LIST—NOT PREPAID

Prices indicated are per 100 F.O.B., St. Charles, Minn. Twenty-five or more bulbs of the same size and variety will be sold at the 100 rate. Varieties marked (*) can be furnished by the thousand at 8 times the price of 100. 250 or more of the same size and variety will be sold at the 1000 rate. All stock subject to prior sale.

	1	2	3	4	5	6	½ Pt.	Bbts.	Qt.
*AUTUMN GOLD	8.00	7.00	6.25	5.25	4.25	3.25	4.00	12.00	
*CAMELLIA				2.00	1.25	.80	.75	1.25	
CHINA MAID	15.00	13.00							
DISCOVERY	45.00								
LIBERATOR	8.00	7.00			4.50	3.50			
*MARGARET FULTON					1.25	.80	.50	1.25	
MOHAWK		12.00	9.00		7.00	4.00	3.50	12.00	
MYRTH				45.00	35.00	30.00	1000—	\$60.00	
OPHIR	35.00	32.00			20.00	15.00	25.00		
PARNASSUS							4.00	12.00	
PAUL REVERE	30.00	25.00			15.00	10.00	20.00		
RED PLUSH	65.00								
ROSE O'DAY	100.00	80.00	65.00	55.00	50.00	40.00	1000—	\$70.00	
*SNOWSPRITE	15.00	13.00	11.00	9.00	7.00	4.00	7.00	20.00	
WASAGA							.75	2.00	
WHITE CAMELLIA	15.00	13.00			7.00	4.00	7.00	20.00	
*DE LUXE MIX		2.50	2.00	1.50	1.10	.75		.75	

COLLECTION SPECIAL NO. 1

1 large bulb of each of the following:

- Rose O'Day
 - Blessed Damozel
 - Candelabra
 - Red Plush
 - Myrth
- \$6.25 value for \$5.00**

COLLECTION SPECIAL NO. 2

- 1 L Ophir
 - 2 L Centennial
 - 1 L Maxwelton
 - 1 L Legend
 - 1 L Discovery
 - 2 L White Camellia
 - 2 L China Maid
 - 2 L Mohawk
 - 1 L Paul Revere
 - 2 L Snowsprite
- \$4.85 value for \$3.50**

COLLECTION SPECIAL NO. 3

- 5 L Autumn Gold
 - 3 L Mother Kadel
 - 8 L Black Opal
 - 5 L Marguerite
 - 6 L Edith Grace
 - 3 L Red Charm
 - 4 L Liberator
 - 3 L China Maid
 - 3 L Lady Jane
 - 4 L Parnassus
 - 8 L Camrose
- \$6.80 value for \$5.00 — Any 5 items \$2.75**

INSTRUCTIONS FOR ORDERING BULBS

All orders for \$2.00 or over postpaid. Prices in this list are net. All orders must be accompanied by cash in full or 25% cash may be sent with the order and the balance before shipment. All stock is guaranteed true to name, disease-free, and thrip-free. All stock is offered subject to prior sale. Planting instructions included with each order. If any of our customers are willing to pay the transportation charges on their order, we will see that there are bulbs of a value much larger than the shipping cost added to the order to offset these charges.

Where bulblets are listed by the packet, 50 to 100 or more will be included in each packet. Excellent value guaranteed.

Five bulbs will be sold at one half the price of ten, but no single item will be accepted for less than 20 cents, unless quoted. If no 10 price is stated, it may be found by multiplying the price of a single item by 8.

We earnestly urge you to order as early as possible to avoid disappointment.